
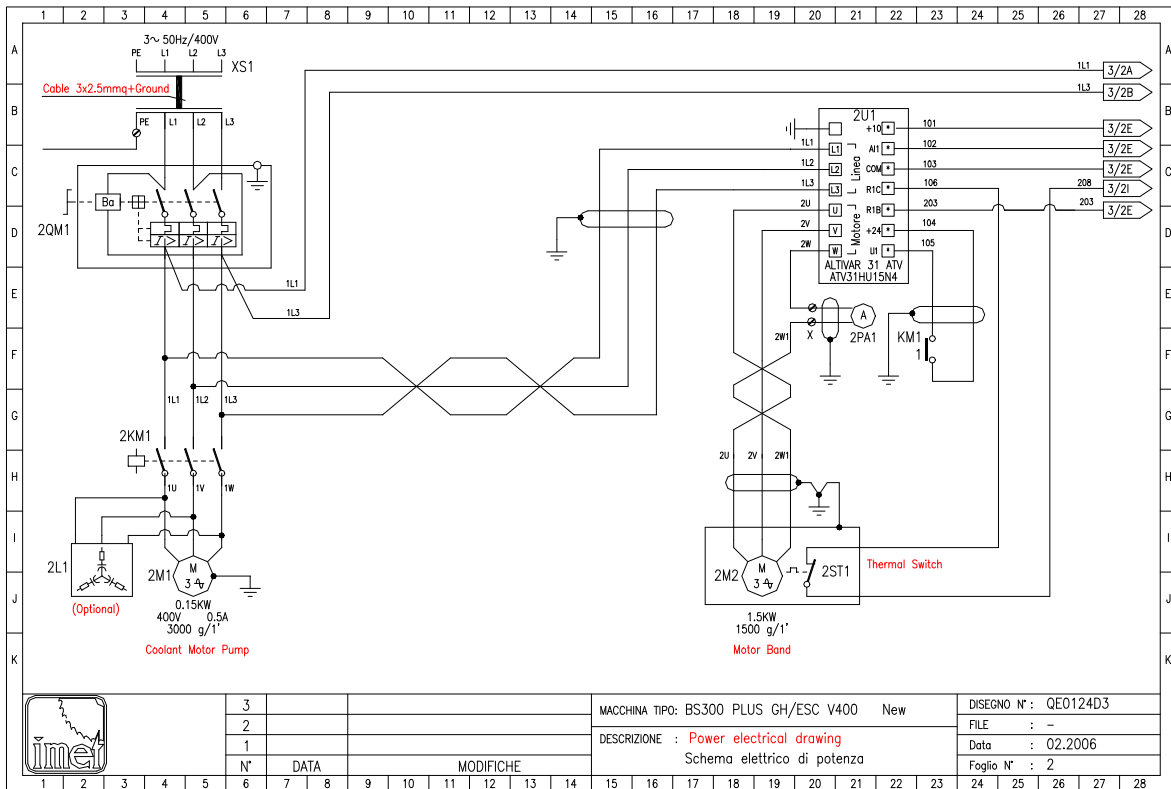
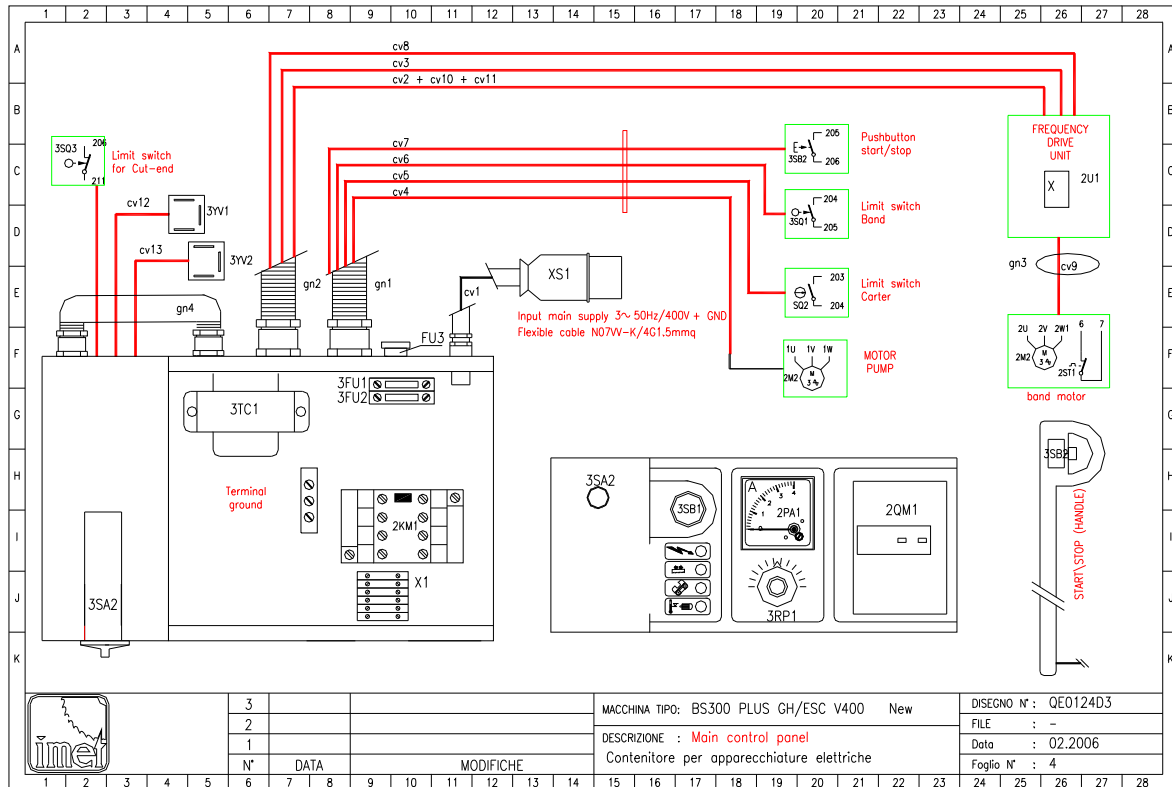
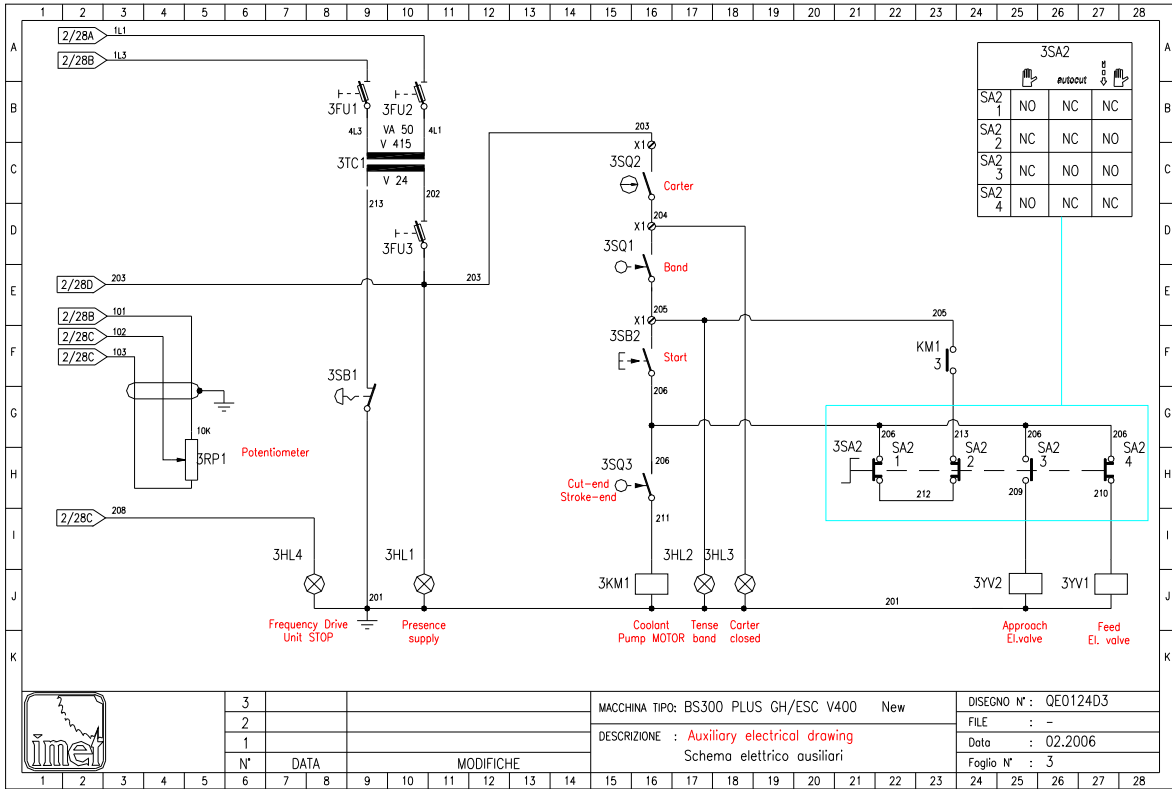


INSTRUCTIONS FOR USE.

1	2	3	4	5	6	7	8	9	10	11	12	13	14	15	16	17	18	19	20	21	22	23	24	25	26	27	28			
A																													A	
B																													B	
C																													C	
D																													D	
E																													E	
F																													F	
G																													G	
H																													H	
I																													I	
J																													J	
K																													K	
DEVICE DESIGNATIONS AT Main control B Proximity switch C Capacitor FU Fuse block KM Control master relay HL Pilot light L Filter suppressor M Motor PA Ampermeter QM Circuit breaker RP Potentiometer SA Selector switch SB Pushbutton SQ Limit switch SP Pressure switch ST Thermic switch TC Control circuit transformer TV Voltage transformer U Controller A.C. V Rectifier diode VC Rectifier bridge X Terminal block XS Plug XP Receptacle YV Solenoid valve						CODE TO NUMBER AUXILIARY CONDUCTORS (ABCD) AB = page's number CD = progressiv conductor's number						CODE TO INITALLING FOR ELECTRIC EQUIPMENT (A B C) A = page's number B = device designation C = progressiv's number						CODE TO LOCATE OF RELAY CONTACTS (A . B) A = page's number B = column's number						CODE TO REFER LINE (A / B) A = page's number B = column's number and letter's line						
						3																								
		2																												
		1																												
		N°	DATA																											
						MODIFICHE						MACCHINA TIPO: BS300/60 "Unificato" 2V 400V						DISEGNO N°: QE0165B2												
												DESCRIZIONE : Device designations						FILE : -												
												Legenda simbologia elettrica						Data : 09.2001												
																		Foglio N° : 1												




INSTRUCTIONS FOR USE.



INSTRUCTIONS FOR USE.

1	2	3	4	5	6	7	8	9	10	11	12	13	14	15	16	17	18	19	20	21	22	23	24	25	26	27	28
REF.	DEVICE	SPECIFICATIONS					FUNCTION					FACTORY	TYPE	ITEM N°	Q.TY												
A	3FU1	Fuse block	4mmq. - 6A	Primary protection transformer					CONTACTLIP	STK1-PA	694520	1															
B	3FU1	Fuse	5x25mm. - Size 2A	Primary protection transformer					WEBER	5x25mm./2A	390010	1															
B	3FU2	Fuse block	4mmq. - 6A	Primary protection transformer					CONTACTLIP	STK1-PA	694520	1															
B	3FU2	Fuse	5x25mm. - Size 2A	Primary protection transformer					WEBER	5x25mm./2A	390010	1															
C	3FU3	Fuse block	Munting of panel	Secondary protection transformer					E.S.	PTF/30	694765	1															
C	3FU3	Fuse	5x20mm. - Size 6.3A	Secondary protection transformer					WEBER	5x20mm./6.3A	390001	1															
C	2KM1	Control master relay	4KW - 9A - 24Vac	Power coolant motor pump					LOVATO	MC9-10-24	260750	1															
D	2M1	3Phase motor	0.15KW-400V- 3000g/1'	Coolant motor pump					OMCG	PMU40L P90	331416	1															
D	2M2	3Phase motor	1.5/1.8KW-400V-1500/3000g/1'	Circular motor					ELECTROADDA	B5 FC 90 2/4 POLI	590050	1															
D	2L1	Filter (optional)	RC+Cable 575V	Noise suppressor					MPM	130809	334010	1															
E	2PA1	Ampermeter	0 / 5 a Mec 72X72	BAND motor current control					PANTEC	72/72 5A ANALOG.	118282	1															
E	3HL1/2/3	Pilot lights	IP44 + Cable 1.200mm-24V	Supply=White Band=Green Carter=Green					SIGNALUX	ART3190 24V	786691	1+2															
F	3HL4	Pilot lights	IP44 + Cable 1.200mm-24V	STOP frequency drive unit = red					SIGNALUX	ART3190 24V	786691	1															
F	2QM1	Circuit breaker	3P/P.1.16KA/4-6.3A/Rate 4.5A	Main circuit breaker - Ampere rating 4.5					LOVATO	11LM25 6V3T	764555	1															
F	2QM1	Min. voltage relay	400V	Unload main circuit					LOVATO	LMU380/415	164803	1															
G	2QM1	BOX	IP55	Box for main circuit breaker					LOVATO	11LMZ113+105	764666	1															
G	2QM1	Emergency button	IP55 rotating type	Break-off magnetic protector					LOVATO	11LMZ106	709185	1															
G	3RP1	Potentiometer	10K Ohm Rotatin type, diam.6X50	Control speed band motor							699748	1															
H	3RP1	Handle for Potentiometer	Hole diam. 22mm, rear type	Control speed band motor					CCE - CEMA	080 PTZ	699748	1															
I	3SB1	Pushbutton (handle)	6A 250 V	Control band motor					BREMAS	AP65	520821	1															
I	3SQ1	Limit switch	IP00 - NC/0/NO	Control band position					PIZZATO	MS 06	520916	1															
I	3SQ2	Limit switch	IP65 - NC/0/NO	Control carter close					PIZZATO	FK3393-01	520765	1															
I	3SQ3	Limit switch	IP67 - NC/NO - w/cable	CUT END					TELEMECANIQUE	XCMA 1023	521145	1															
J	2ST1	Thermal switch	Classe B	Overcurrent protection band motor					TERMIK			1															
J	3TC1	Control circuit transformer	50VA-Vi 230/400-Vu 24 CEI1418	Main auxiliary supply					C.E.	TM VA50	932500	1															
K	2U1	Frequency drive unit	1.5KW-400V/3 phase	Control speed circular motor					TELEMECANIQUE	ATV31HU15N4	521200	1															




3
2
1
N° DATA

MODIFICHE

MACCHINA TIPO: BS300 PLUS GH/ESC V400 New
DESCRIZIONE : General list of electrical equipments
Elenco generale componenti elettrici

DISEGNO N° : QE0124D3
FILE : -
Data : 02.2006
Foglio N° : 5

1	2	3	4	5	6	7	8	9	10	11	12	13	14	15	16	17	18	19	20	21	22	23	24	25	26	27	28
REF.	DEVICE	SPECIFICATIONS					FUNCTION					FACTORY	TYPE	ITEM N°	Q.TY												
B	XS1	Plug	3 P+Neutral+Heart IEC 309 16A	Connection main supply					ILME	PE 1665 SV	787000	1															
B	X2	Insulation terminal	Sez. 1.5mmq	Connection thermal switch					K.E.	35038 + 35004	182942 + 182945	2															
C	X1	Terminal block	Double terminal block 2.5 mmq	Connection external equipments					CONTACTLIP	RKD 2.5 PA	559092	6															
C	X	Terminal block	terminal block 2.5 mmq	Connection external equipments					SCHIAVI	ART6904	588853	1															
D	gn1	Flexible tube	PVC 1"	Connection external equipments					TEAFLEX	PAS-G29B	507382	1															
D	gn2	Flexible tube	PVC 3/4"	Connection external equipments					TEAFLEX	PAS-G23B	507386	1															
D	gn3	Flexible tube	PVC 1/2"	Connection external equipments					TEAFLEX	PAS-G17B	507392	1															
D	gn2	FLEXIBLE CABLE	PVC 1/2"	CONNECTING					TEAFLEX	PAS G 17 B	507392	1															
E	cv1	Flexible cable	NO7W-K 4G2.5mmq.	Connection main supply							205065	1															
E	cv2	Flexible cable	3 X 0.75 + shield	Connection frequency drive unit (controls)								1															
E	cv3	Flexible cable	1 X 1.5 mmq + shield	Connection frequency drive unit (power)								5															
F	cv4	Flexible cable	NO7W-K 4G1.5mmq.	Connection coolant motor pump							205065	1															
F	cv5/cv6	Flexible cable	NO7W-K 2x1 mmq.	Connection limit switch carter and band								1+1															
F	cv7	Flexible cable	NO7W-K 2x1 mmq. Black	Connection pushbutton start/stop (handle)								1															
G	cv8	Flexible cable	1 X 1.5 mmq + shield	Connection frequency drive unit (ammeter)								2															
G	cv8	Flexible cable	1 X 1.5 mmq + shield	Connection band MOTOR								5															
H	cv12/13	FLEXIBLE WIRE	NO07V-K 2X1 mmq 60cm	CONNECTION								2															
H	cv2	Flexible cable	2 X 0.75 + shield	Connection frequency drive unit (controls)								1															
H	cv2	Flexible cable	2 X 0.75	Connection frequency drive unit (controls)								1															
I	3SA2	SELECTOR 3 POS.	3 POS. DIA. 22 RANGE	MANUAL/GRAVITY FEED SELECTOR					BRETER	RM 310 N	773823	1															
I	3SA2/1	EL.CONTACT	NO ADVANCE CONTACT YELLOW TYPE	MANUAL/GRAVITY FEED SELECTOR					BRETER	VAO+P24420G	260399	2															
I	3SA2/2	EL.CONTACT	NC ADVANCE CONTACT GREY TYPE	MANUAL/GRAVITY FEED SELECTOR					BRETER	VRO+P24419H	260235	1															
I	3SA2/3	EL. CONTACT	NC RED IP20	MANUAL/GRAVITY FEED SELECTOR					BRETER	VAO+P24417R	260231	1															
J	3SA2/4	EL.CONTACT	NO ADVANCE CONTACT YELLOW TYPE	MANUAL/GRAVITY FEED SELECTOR					BRETER	VAO+P24420G	260399	2															
J	3YV1	EL. VALVE	2/2 NC 24V AC	HEAD LOWERING					ACL			1															
J	3YV2	EL. VALVE	2/2 NC 24V AC	HEAD LOWERING					ACL			1															



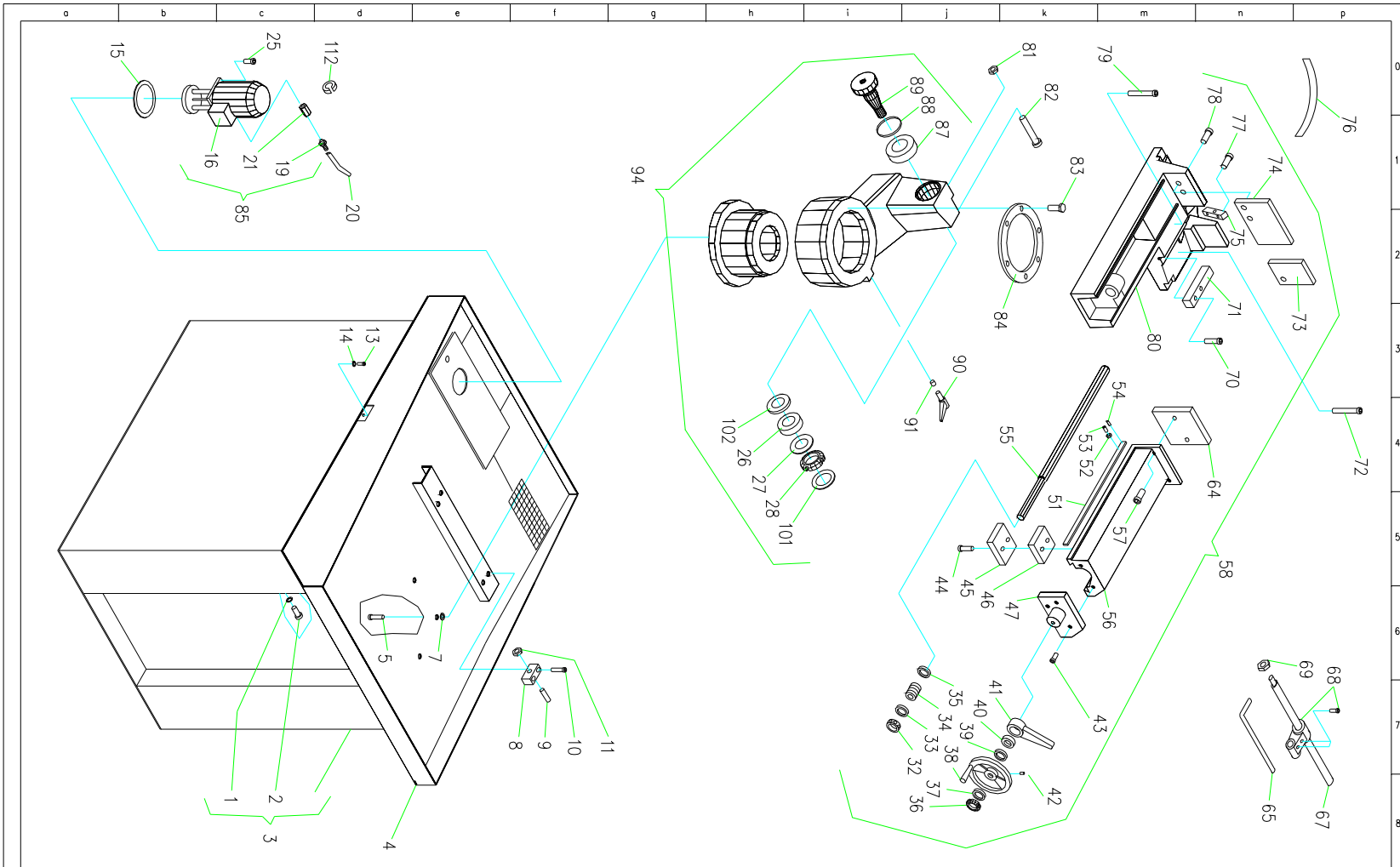
3
2
1
N° DATA


MODIFICHE

MACCHINA TIPO: BS300 PLUS GH/ESC V400 New
DESCRIZIONE : General list of electrical equipments
Elenco generale componenti elettrici

DISEGNO N° : QE0124D3
FILE : -
Data : 02.2006
Foglio N° : 6


INSTRUCTIONS FOR USE.



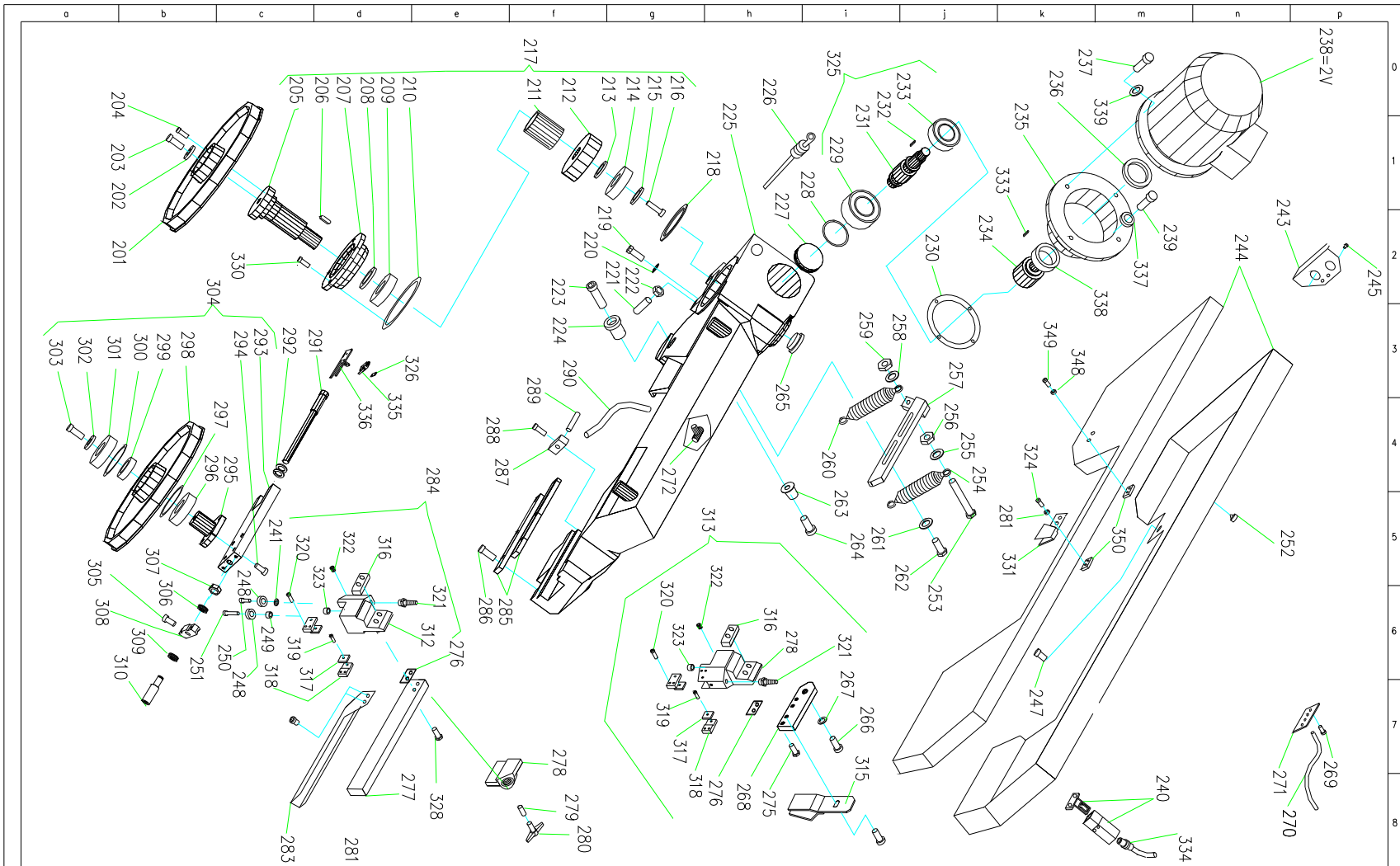
	Tavola NG 1\9		Data 11/98	Diseg. RCD	Dis. Ng RI0100D3
	Denominazione RICAMBI	Gruppo NEW BS300/60			
	NEW BS300/60		Data	Modifica	


INSTRUCTIONS FOR USE.

a	b	c	d	e	f	g	h	i	j	k	m	n	p
Nº	ITEM	DESCRIPTION	Q	Nº	ITEM	DESCRIPTION	Q	Nº	ITEM	DESCRIPTION	Q		
1	744820	WASHER 8X24X2	2	51	280052	VICE ADJUSTMENT WEDGE	1	101	129736	SEL RING 22X47X7	1		
2	995145	HEXAGON SCREW VTE 8X20	2	52	307720	HEXAGONAL NUT M8	6	102	735704	SUPPORT WASHER SS25X35X2	1		
3	227379	IRON BASE BS 280 PLUS	1	53	945432	SOCKET SET SCREW VCE GRANO 8X30 C	6	103					
4	142813	IRON SHEET BASE	1	54	788270	ELASTIC PIN 5 X10	2	104					
5	973445	SOCKET HEAD SCREW VTCE M12X30	4	55	957140	VICE SCREW	1	105					
6				56	184879	VICE CARRIAGE 280/60	1	106					
7	118932	SEAL O-RING 119	4	57	984258	HEXAGON SCREW VTE 10X25	2	107					
8	132198	STROKE-END LIMIT 280/60	2	58	549010	CPL MANUAL VICE	1	108					
9	946748	SOCKET SET SCREW VCE 14X20A UNI5923	2	59				109					
10	979645	SOCKET HEAD SCREW VTCE M8X30		60				110					
11	307720	HEXAGONAL NUT M8	2	61				111					
12	505800	COOLANT GRID	1	62				112	331925	LOCKING RING TORRO W2 12-20	2		
13	986865	HEXAGON SCREW VTE 12X25	2	63				113					
14	744987	WASHER D.12X30X4	2	64	486448	CLOSING VICE JAW	1	114					
15	510200	ELECTRIC PUMP FLAT SEAL D.130X102X2	1	65	726786	12 MM DIA ROD FOR LENGTH DEVICE	1	115					
16	331416	COOLANT ELECTRIC PUMP P.90 AST30	1	66				116					
17				67	136827	20 MM DIA ROD FOR LENGTH DEVICE	1	117					
18				68	725445	ALLUMINIUM LOCKING DEVICE	1	118					
19	696346	NYLON FITTING WES R1\2 WITH ELBOW	1	69	303845	HEXAGONAL NUT M12	1	119					
20	935500	COOLANT TUBE D.8 X 14	3m	70	978095	SOCKET HEAD SCREW VTCE M8 X 20	2	120					
21	755995	COOLANT BALL VALVE 1/2"	1	71	658675	SUPPORT FOR VICE WORKTABLE	1	121					
22				72	974995	HEXAGON SCREW VTE 12X50	1	122					
23				73	492568	RIGHT CAST IRON JAW	1	123					
24				74	492611	LEFT CAST IRON JAW	1	124					
25	976545	SOCKET HEAD SCREW VTCE M6X20	4	75	157206	IRON PLATE FOR VICE	1	125					
26	283011	BEARING 32005X 25X47X15	1	76	910710	ANGLE PLATE FOR PLATFORM	1	126					
27	750100	SAFETY WASHER M8	1	77	996700	HEXAGON SCREW VTE 8X35	2	127					
28	497110	IRON RING KM5	1	78	973874	SOCKET HEAD SCREW VTCE M12X35	2	128					
29				79	975770	SOCKET HEAD SCREW VTCE M12X80	1	129					
30				80	159990	VICE WORKTABLE	1	130					
31				81	303845	HEXAGONAL NUT M12	1	131					
32	288097	AXIAL BEARING 51104 20X35X10	1	82	975810	SOCKET HEAD SCREW VTCE M12X90	1	132					
33	735602	SUPPORT WASCHER SS22X32X2	1	83	978095	SOCKET HEAD SCREW VTCE M8X20	6	133					
34	545458	VICE SPRING	1	84	494604	THREADED RING	1	134					
35	735602	SUPPORT WASCHER SS22X32X2	1	85	331088	CPL COOLANT PUMP	1	135					
36	499145	IRON RING GUK M15X14 AUTOBL.	1	86				136					
37	742783	WASCHER 24X17X4	1	87	283102	BEARING 32008XA 40X68X19	1	137					
38	963615	VICE HANDLE	1	88	119621	SEAL O-RING 171	1	138					
39	288097	AXIAL BEARINGS51104 20X35X10	1	89	651426	TURNING PIN	1	139					
40	694083	VICE BERING SUPPORT	1	90	536675	LOCKING HANDLE M12 X 45	1	140					
41	529153	VICE LEVER FOR RAPID CLOSING	1	91	632788	BRASS SPACER	1	141					
42	944204	SOCKET SET SCREW VICE GRANO 8X10C	1	92	683208	TURNING PLATFORM	1	142					
43	978095	SOCKET HEAD SCREW VTCE M8 X 20	4	93	686403	VICE SUPPORT	1	143					
44	981195	SOCKET HEAD SCREW VTCE M8X40	2	94	068320	CPL TURNING PLATFORM	1	144					
45	154080	VICE GUIDE	1	95				145					
46	153980	THEADED VICE GUIDE	1	96				146					
47	694147	VICE LEVER SUPPORT	1	97				147					
48				98				148					
49				99				149					
50				100				150					

	Tavola NG 2\9		Data 11/98	Diseg. RCD	Dis. Ng RI0100D3
	Denominazione ELENCO RICAMBI	Gruppo NEW BS300/60			
	NEW BS300/60		Data	Modifica	

INSTRUCTIONS FOR USE.



	Tavola NG 3/9		Data 11/98	Diseg. RCD	Dis. Ng RI0100D3
	Denominazione RICAMBI ARCO NEW BS300/60	Gruppo NEW BS300/60			
			Data	Modifica	

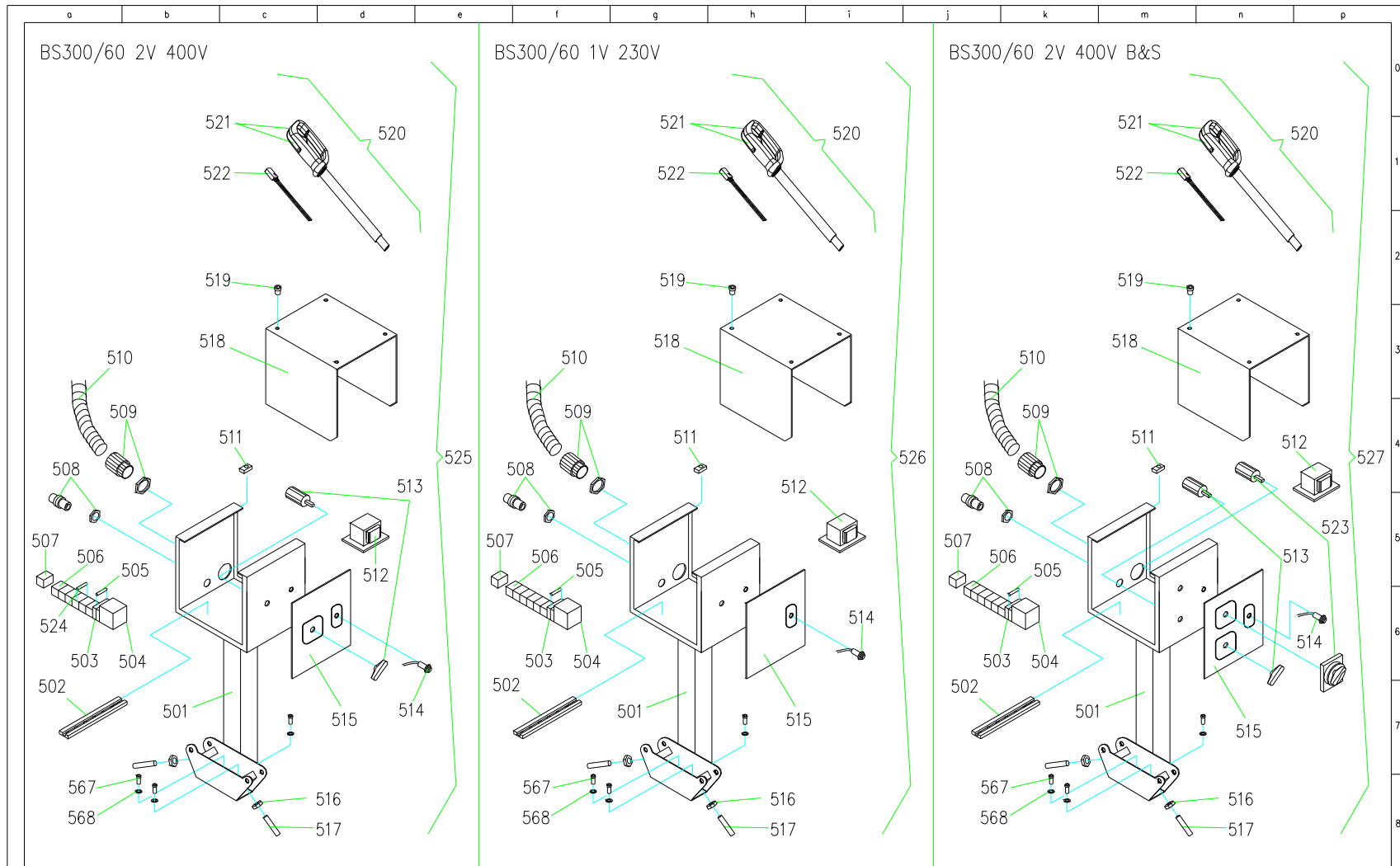
INSTRUCTIONS FOR USE.


Nø	ITEM	DESCRIPTION	Q	Nø	ITEM	DESCRIPTION	Q	Nø	ITEM	DESCRIPTION	Q
201	707195	REAR PULLEY 320 MM. DIA	1	251	994800	SCREW M6X30	1	301	291020	BEARING 6207EE 35X72X17	1
202	546938	CUP SPRING 40X20.4X2.5	1	252	521585	PLASTIC FIXING PLATE	7	302	742333	WASHER 45X35X10.5	1
203	956844	LEFT HANDED THREAD SCREW M14X30	1	253	988375	HEXAGON SCREW VTE 12X80	2	303	964920	FLARED SOCKET SCREW VSP 10X30	1
204	977650	SOCKET HEAD SCREW VTCE 8X16	1	254	547652	SAW FRAME RETURN SPRING	1	304	065866	FRONT PULLEY, SHAFT & SUPPORT ASSEMBLY	1
205	113517	SHAFT FOR REAR PULLEY	1	255	744987	WASHER D.12X30X4	2	305	978870	BLADE STROKE-END SUPPORT	2
206	216270	KEY 8X7X25	1	256	303845	HEXAGONAL NUT M12	2	306	127810	SEGER RING A17	1
207	349584	REDUCTOR CLOSING FLANGE	1	257	688448	SPRING CONNECTION PLATE	1	307	304620	HEXAGONAL NUT M12	2
208	129107	SEAL RING 55X70X8	1	258	744987	WASHER D.12X30X4	2	308	157210	BLADE TENSIONER SUPPORT	1
209	288995	BEARING 6209 45X85X19	1	259	294306	SELF-LOCKING NUT M12	2	309	288090	AXIAL BEARING	1
210	511330	FLAT SEAL FOR FLANGE D.145X110	1	260	547652	SAW FRAME RETURN SPRING	1	310	182476	BLADE TENSIONER BUSH	1
211	322160	CROWN SPACER	1	261	744987	WASHER D.12X30X4	2	311	984258	HEXAGON SCREW VTE 6X30 UNI5739	4
212	276674	BRONZE CROWN m3	1	262	974100	SOCKET HEAD SCREW TCE 12X30 UNI5931	1	312	631167	BLADE GUIDE FRONT SUPPORT	1
213	735755	SUPPORT WASHER 30X42X2.5	1	263	179945	12 MM DIA STEEL BUSHING	1	313	631165	BLADE GUIDE REAR SUPPORT ASSEMBLY	1
214	288726	BEARING 6209 45X85X19	1	264	974100	SOCKET HEAD SCREW VTE 12X40	1	314	522913	SAFETY MICROSWITCH SUPPORT PLATE	1
215	742282	FLARED WASHER 40X30X10.5	1	265	786162	OIL LIGHT 45 MM DIA	1	315	728560	BLADE REAR COVER BS 280 PLUS	1
216	964920	SOCKET FLAT SCREW VSP 10X30	1	266	969630	SOCKET FLAT SCREW VSP 12X30 UNI5933	1	316	661920	LOCKING PLATE M8	2
217	Q11351	REAR PULLEY SHAFT ASSEMBLY	1	267	737845	FLARED WASHER D.35 X5	1	317	515800	SQUARE CARBIDE INSERT	4
218	544666	CUP SPRING FOR BEARING	1	268	688820	BLADE GUIDE REAR SUPPORT	1	318	697300	CARBIDE INSERT SUPPORT	4
219	986740	HEXAGON SCREW VTE 12X16	1	269	970273	SOCKET HEAD SCREW VTE 8X12	2	319	965900	FLARED SOCKET SCREW VSP M4X8	4
220	734745	ALUMINIUM WASHER 1/4"	1	270	936359	PLASTIC HOSE 6X9 MM	2	320	975913	SOCKET HEAD SCREW TCE M4X12	8
221	943562	SOCKET SET SCREW VTE 12X40 A	1	271	521951	IRON SHEET FOR COOLANT DISTRIB.	1	321	696080	NYLON HOSE ADAPTORS GES6 R1/8	1
222	303845	HEXAGONAL NUT M12	1	272	327281	COOLANT DISTRIBUTOR	1	322	943662	SOCKET SET SCREW VCE M5X5	4
223	975898	SOCKET HEAD SCREW VTCE 16X45	1	273				323	515780	SPECIAL ROUND CARBIDE INSERT	2
224	177280	BUSHING D.16 FOR TURNING PIN	1	274				324	978095	SOCKET HEAD SCREW TCE M8 X 20	2
225	131828	CAST IRON SAW FRAME	1	275	979645	SOCKET HEAD SCREW VTCE 8X30	2	325	095892	ENDLESS SCREW m3 & BEARING ASSEMBLY	1
226	865362	OIL INLET PLUG	1	276	322058	BLADE GUIDE SPACER	1	326	661915	M3 IRON PLATE	1
227	315285	ADJUSTMENT DISC	1	277	688800	BLADE GUIDE SLIDING BAR	1	327			
228	119395	SEAL O-RING 159	1	278	798940	CAST IRON BLADE GUIDE SUPPORT	1	328	978870	SOCKET HEAD SCREW TCE 8X25 CL.8.8 UNI5931	2
229	286302	BEARING 31305 A	1	279	172190	INSIDE BRASS PIN M8	1	329			
230	511300	FLAT SEAL 120X80	1	280	962930	LITTLE HANDLE M8	1	330	968020	FLARED SOCKET SCREW VSP 8X20 UNI5933	4
231	958928	ENDLESS SCREW m3	1	281	744045	SPECIAL WASHER D20X5	2	331	728563	BLADE REAR COVER BS 280 PLUS	1
232	214700	KEY 6X6X20	1	282	976090	SOCKET HEAD SCREW TCE 5X10 UNI5931	2	332			
233	286795	BEARING .30305A 25X62X15\13	1	283	728542	FRONTAL BLADE COVER	1	333	215123	KEY 8X7X15 UNI6604	1
234	500316	NYLON COUPLING M24 D.19X24	1	284	631163	FRONT BLADE GUIDE ASSEMBLY	2	334	630811	CABLE GLAND PG11 MIRKO	1
235	523762	MOTOR AND SAW FRAME COUPLING	1	285	658340	BLADE TENSIONER PLATE GUIDE	1	335	520941	MICROSWITCH	1
236	128702	SEAL RING 25X35X7	1	286	995145	HEXAGON SCREW VTE 8X20	6	336	699580	PLATE	1
237	984258	HEXAGON SCREW VTE 10X25	4	287	157206	BLADE TENSIONER THREADED PIECE	1	337	750011	SCHNORR WASHER D.8	4
238	590050	ELECTR. MOTOR 2/4 POLES FC90 B5 400 VOLT	1	288	979645	SOCKET HEAD SCREW VITE TCE 8X30	2	338	325859	MOTOR SHAFT SPACER	1
239	978095	SOCKET HEAD SCREW VTCE 8X20	4	289	943627	SOCKET SET SCREW VCE 12X45 C	1	339	746370	FLAT WASHER D.10	4
240	520765	SAFETY LIMIT SWITCH	1	290	936359	PLASTIC HOSE 6X9 MM	1	340			
241	748695	WASHER DIA .8	3	291	792331	BLADE TENSIONING PIN	1	341			
242				292	546957	CUP SPRING 31.5X16.3X2	18	342			
243	698310	EL. SWITCH & TUBE SUPPORT	1	293	658663	FRONT PULLEY PLATE SUPPORT	1	343			
244	201538	NEW BLADE COVER ASSEMBLY	1+1	294	978870	SOCKET HEAD SCREW VTCE 8X25	4	344			
245	995090	HEXAGON SCREW TE 8X16 UNI5739	2	295	113502	SHAFT FOR FRONT PULLEY	1	345			
246				296	291020	BEARING 35X72X17	1	346			
247	970273	SOCKET HEAD SCREW VTCE 8X12	5	297	128116	SEGER INTERNAL J72	1	347			
248	291304	BEARING 607 ZZ	2	298	707209	FRONT PULLEY D.320	1	348	744045	SPECIAL WASHER D.20	2
249	179458	SPACER DIA 8	1	299	327118	PULLEY SPACER	1	349	977650	SOCKET SET SCREW TCE 8X16 UNI5931	2
250	994512	SCREW M6X16	1	300	128116	SEGER INTERNAL RING J72	1	350	661920	BRUSH LOCKING PLATE	1



Tavola NG	4\9	Dato	11/98	Diseg.	RCD	Dis. Ng	RI0100D3
Denominazione	ELENCO RICAMBI ARCO BS300/60	Gruppo	NEW BS300/60	Dato		Modifico	


INSTRUCTIONS FOR USE.



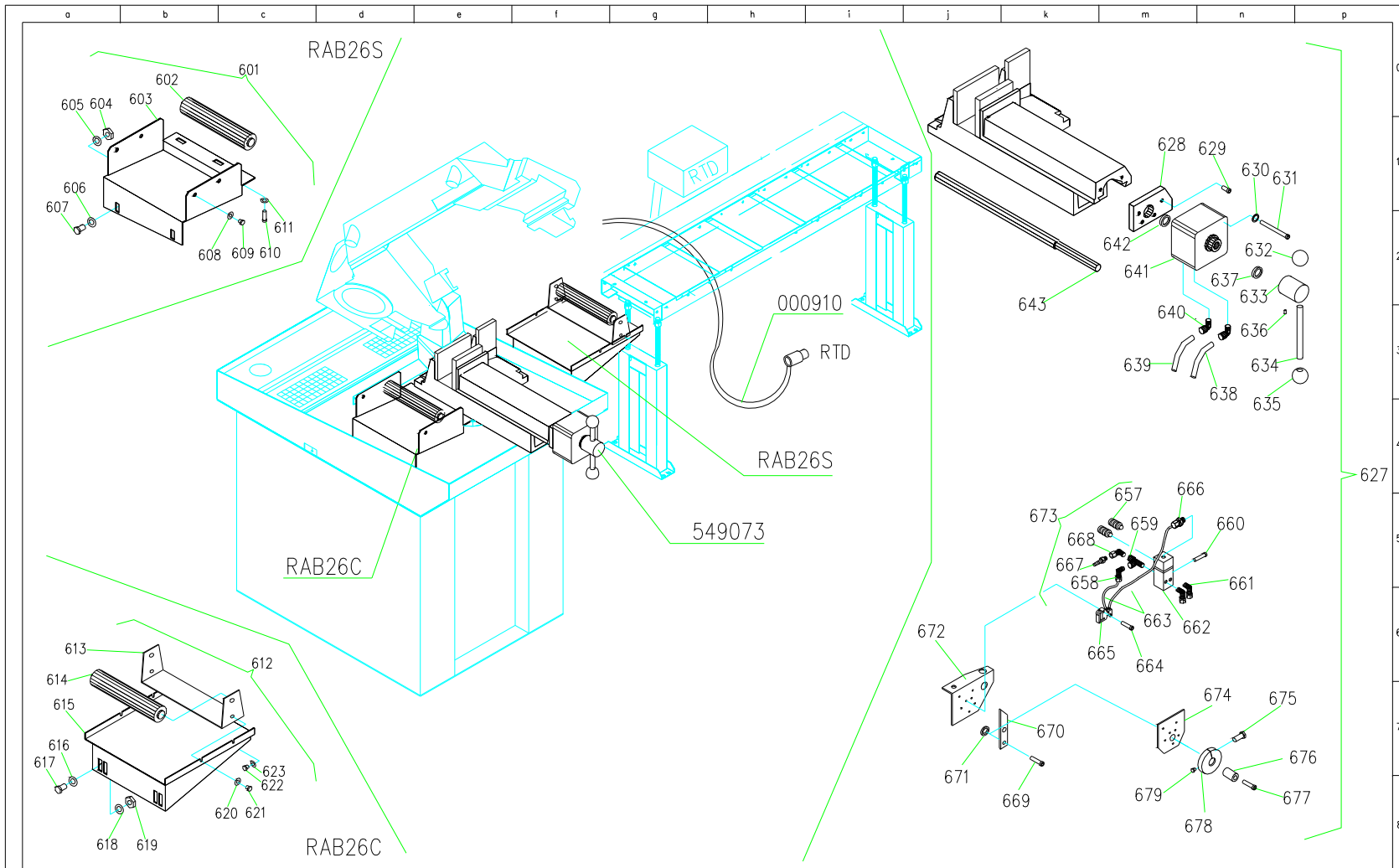
	Tavola NG 5\9		Data 11/98	Diseg. RCD	Dis. Ng RI0100D3
	Denominazione RICAMBI QUADRO ELET. NEW BS300/60	Gruppo NEW BS300/60			
			Data		Modifica


INSTRUCTIONS FOR USE.

N°	ITEM	DESCRIPTION	Q	N°	ITEM	DESCRIPTION	Q	N°	ITEM	DESCRIPTION	Q
501	169462	ELECTRIC BOARD SUPPORT	1					601			
502	700650	OMEGA SUPPORT 3F 35X7.5	1	552				602			
503	694765	PANEL FUSE HOLDER 5X25	3	553				603			
504	260750	CONTACTOR MC910 2450AC NO LOVATO	2	554				604			
505	390010	SPECIAL FUSE 5X25 AMPS.....	2	555				605			
506	559092	TERMINAL CONNECTION VIKING 4mmq 500V	6	556				606			
507	558810	TERMINAL CONNECTION ES35	1	557				607			
508	630700	CABLE GLAND PG11 RTA84213+DAD086564	1	558				608			
509	718862	ELECTR. FITTING, RIGHT PMA PG29 +DADO	1	559				609			
510	507382	ELECTR. HOSE PMA PAS G29B 1"/PG29	1	560				610			
511	667765	FIXING PLATE RPE0166-4.8	4	561				611			
512	932350	TRANSFORMER VAR.18W V240/415/24V 50-60Hz	1	562				612			
513	257909	SPEED SELECTOR 12A 1-0-2	1	563				613			
514	786691	WARNING LIGHT SIGNALUX 3190 V24, COLOR...	3	564				614			
515	905251	LABEL FOR CONTROL PANEL	1	565				615			
516	303845	HEXAGONAL NUT M12 UNI5587	2	566				616			
517	946675	SOCKET SET SCREW VCE GRANO 12X60 A	2	567	977650	SOCKET HEAD SCREW VTCE 8X16	3	617			
518	265815	COVER FOR CONTROL PANEL	1	568	749470	FLAT WASHER D.8	3	618			
519	970200	FILLISTER SCREW 4.8X16 U6954	4	569				619			
520	132285	24V CONTROL LEVER ASSEMBLY	1	570				620			
521	513088	LEVER PLASTIC HANDLE , LIGHT BLU	1	571				621			
522	520921	LEVER MICROSWITCH ABV 161060	1	572				622			
523	257909	SPEED SELECTOR	1	573				623			
524	390001	SPECIAL FUSE 5X20 AMPS	1	574				624			
525	239888	2..SPEED CONTROL BOX NEW BS280 COMPL.	1	575				625			
526	239892	1..SPEED CONTROL BOX NEW BS280 COMPL.	1	576				626			
527	239896	2..SPEED "B&S" CONTROL BOX NEW BS280 COMPL.	1	577				627			
528				578				628			
529				579				629			
530				580				630			
531				581				631			
532				582				632			
533				583				633			
534				584				634			
535				585				635			
536				586				636			
537				587				637			
538				588				638			
539				589				639			
540				590				640			
541				591				641			
542				592				642			
543				593				643			
544				594				644			
545				595				645			
546				596				646			
547				597				647			
548				598				648			
549				599				649			
550				600				650			

	Tavola NG 6/9		Data 11/98	Diseg. RCD	Dis. Ng RI0100D3
	Denominazione EL.RICAMBI QUADRO	Gruppo NEW BS300/60			
	NEW BS300/60		Data	Modifica	


INSTRUCTIONS FOR USE.



	Tavola NG 8/9		Data 11/98	Diseg. RCD	Dis. Ng RIO100D3
	Denominazione RICAMBI OPTIONAL	Gruppo NEW BS300/60			
	NEW BS300/60				
			Data	Modifica	

INSTRUCTIONS FOR USE.

a	b	c	d	e	f	g	h	i	j	k	m	n	p	0	1	2	3	4	5	6	7	8
Nº	ITEM	DESCRIPTION	Q	Nº	ITEM	DESCRIPTION	Q	Nº	ITEM	DESCRIPTION	Q											
601	RAB26C	1	651	984002	SOCKET HEAD SCREW TCE 10X35 UNI5931	1	701														
602	759398	1	652	780850	MALE JOINT UNIBALL SMG10	1	702														
603	928801	1	653	746370	FLAT WASCHER D10	3	703														
604	303845	HEXAGONAL NUT M12	2	654	306500	EXAGONAL NUT ES.M6 UNI5588	2	704														
605	747145	FLAT WASHER D.12	2	655	970203	SOCKET HEAD SCREW TCE M12X16 CH6 MK 600	1	705														
606	747145	FLAT WASHER D.12	2	656				706														
607	986865	HEXAGON SCREW TE 12X25	2	657	775918	2	707														
608	749470	WASHER D.8	2	658	719123	RADD AIR FITTING RG4/8=4	1	708														
609	995090	HEXAGON SCREW VTE M8X16	2	659	723120	AIR FITTING T-FORM	1	709														
610	978095	SOCKET HEAD SCREW VTCE 8X20	4	660	976084	SOCKET HEAD SCREW TCE M4X45 UNI5931	2	710														
611	749470	WASHER D.8	4	661	719245	RADD AIR FITTING RG6/8=6	2	711														
612	RAB26S	UNLOADING ROLLER CONNECTION ASSEMBLY	1	662	775045	PNEUMATIC VALVE	1	712														
613	697980	2	663	934306	AIR NYLON HOSE 2X4 PA11	0,6m	713														
614	759398	2	664	975923	SOCKET HEAD SCREW M4X25 UNI5931	2	714														
615	928812	UNLOADING PLATE,	1	665	256670	PNEUMATIC STROKE END	1	715														
616	747145	FLAT WASHER D.12	2	666	716856	RADD AIR FITTING RD 4/8	1	716														
617	986865	SOCKET HEAD SCREW VTCE 8X25	2	667	695995	HOSE ADAPTER PG6-8	1	717														
618	747145	FLAT WASHER D.12	2	668	716465	AIR FITTING ELBOW G-8MF=5020A 1/8	1	718														
619	303845	HEXAGONAL NUT M12	2	669	984320	SOCKET HEAD SCREW TCE 10X40 UNI5739	1	719														
620	749470	WASHER D.8	4	670	628570	BAR FOR PNEUMATIC CONTROL	1	720														
621	995090	HEXAGON SCREW VTE M8X16	4	671	747145	FLAT WASCHER D12	1	721														
622	995090	HEXAGON SCREW VTE M8X16	2	672	699740	POTENTIOMETER SUPPORT	1	722														
623	749470	WASHER D.8	2	673	506841	PNEUMATIC VICE ASSEMBLY BS280	1	723														
624				674	522108	PLATE FOR STROKE-END	1	724														
625				675	976547	SOCKET HEAD SCREW VTCE M6X25	1	725														
626				676	169470	GUIDE RING	1	726														
627	549073	PNEUMATIC CPL. VICE	1	677	984320	SOCKET HEAD SCREW TCE 10X40 UNI5739	1	727														
628	657188	IRON FRONT PLATE FOR PNEUMATIC VICE	1	678	182859	CAM FOR PNEUMATIC STROKE-END BS280	1	728														
629	978095	SOCKET HEAD SCREW VTCE 8X20	2	679	970248	SOCKET HEAD SCREW VTCE M6X12	1	729														
630	744500	VICE WASHER D.9 X 15	6	680				730														
631	983556	SOCKET HEAD SCREW TCE 8X100 UNI5931	2	681				731														
632	513931	BALL HANDLE D.12 X 40	1	682				732														
633	495251	IRON RING FOR VICE HANDLE	1	683				733														
634	537249	VICE HANDLE ROD	1	684				734														
635	513931	BALL HANDLE D.12 X 40	1	685				735														
636	941302	SOCKET SET SCREW M10X14 B	1	686				736														
637	741509	VICE WASHER SS20X28X2	1	687				737														
638	934695	NYLON PIN 4X6	1	688				738														
639	934695	NYLON PIN 4X6	1	689				739														
640	719245	RADD AIR FITTING RG6\8 6-1/8S6520	2	690				740														
641	222750	PNEUMATIC VICE CYLINDER BS280 D.100X10	1	691				741														
642	735602	SUPPORT WASHER 22X32X2	3	692				742														
643	957138	VICE SCREW	1	693				743														
644				694				744														
645	000940	HYDRAULIC BRAKE ASSEMBLY BS280	1	695				745														
646	688737	IRON PLATE FOR BRAKE	1	696				746														
647	976548	SOCKET HEAD SCREW M6X30 UNI 5931	2	697				747														
648	677558	IRON PLATE	1	698				748														
649	362900	HYDRAULIC BRAKE	1	699				749														
650	303070	EXAGONAL NUT M10 UNI5588	1	700				750														

	Tavola NG 9/9	Data 11/98	Diseg. RCD	Dis. Ng RI0100B3
	Denominazione ELENCO RICAMBI	Gruppo NEW BS280/60	Data	Modifica
	OPTIONAL NEW BS280/60	Data	Modifica	Modifica